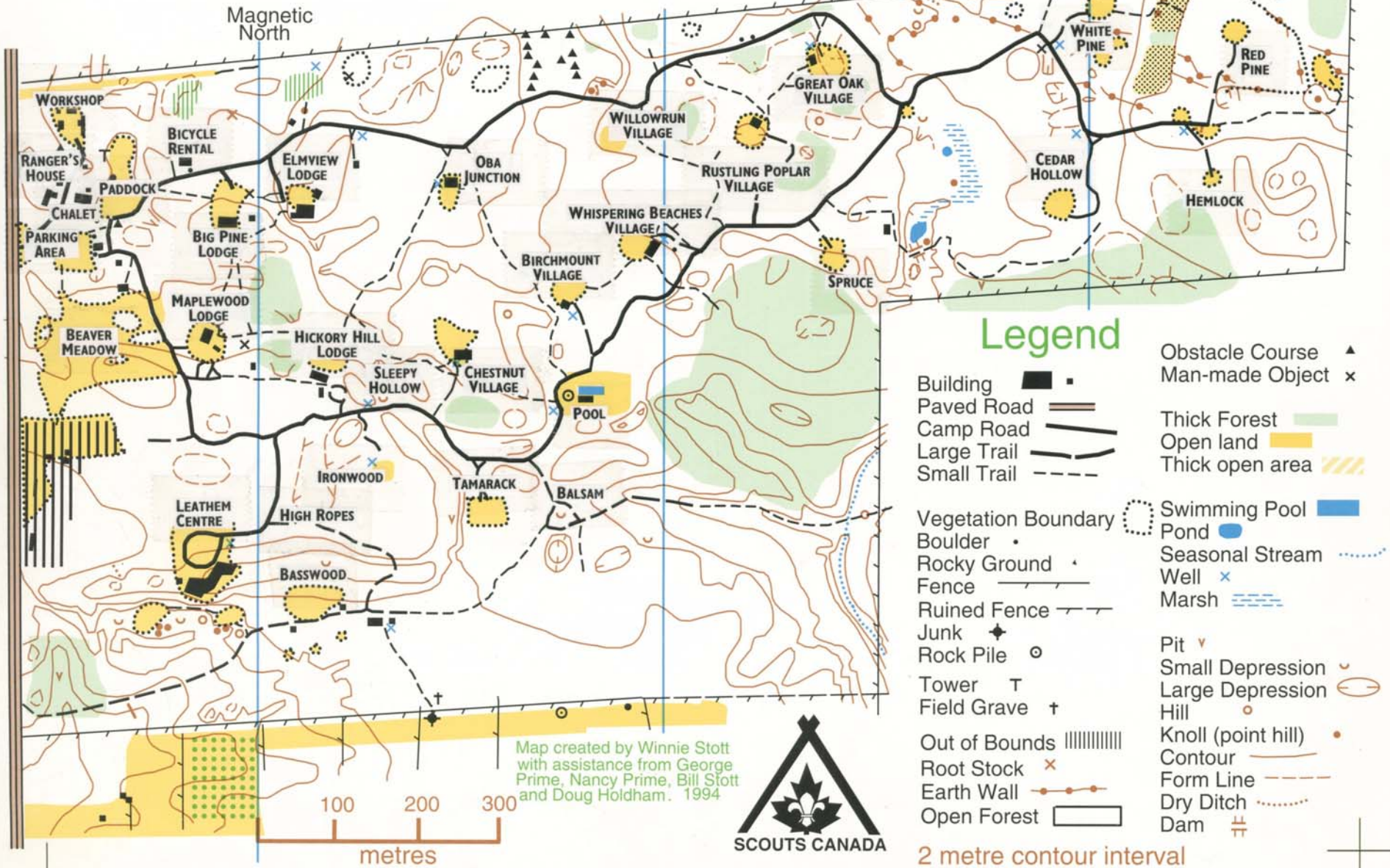


WOODLAND TRAILS



Legend

- | | | | |
|---------------------|-------|--------------------|-------|
| Building | ■ | Obstacle Course | ▲ |
| Paved Road | — | Man-made Object | × |
| Camp Road | — | Thick Forest | ■ |
| Large Trail | — | Open land | ■ |
| Small Trail | - - - | Thick open area | ▨ |
| Vegetation Boundary | ○ | Swimming Pool | ■ |
| Boulder | • | Pond | ● |
| Rocky Ground | ▲ | Seasonal Stream | ⋯ |
| Fence | — | Well | × |
| Ruined Fence | - - - | Marsh | ▨ |
| Junk | ◆ | Pit | ▼ |
| Rock Pile | ○ | Small Depression | ○ |
| Tower | T | Large Depression | ◡ |
| Field Grave | † | Hill | ○ |
| Out of Bounds | | Knoll (point hill) | • |
| Root Stock | × | Contour | — |
| Earth Wall | — | Form Line | - - - |
| Open Forest | □ | Dry Ditch | ⋯ |
| | | Dam | ≡ |

Map created by Winnie Stott with assistance from George Prime, Nancy Prime, Bill Stott and Doug Holdham. 1994



2 metre contour interval

Use of camp property can be arranged by contacting Scouts Canada Greater Toronto Region Camping Department (416) 490-6364 ext. 233